

# 3D vision technology

## PEOPLE COUNTING DEVICE

*AXPER*

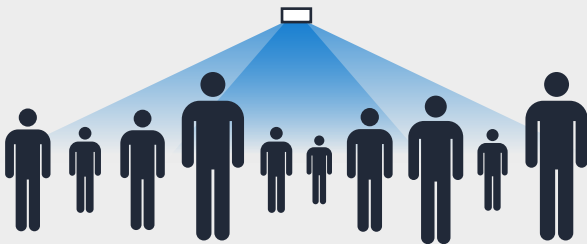


### 3D infrared

#### PEOPLE COUNTER

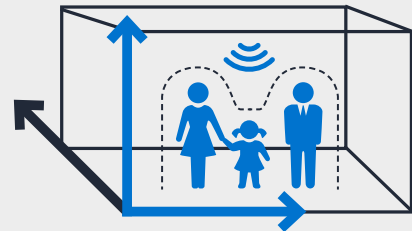
The people counter proposed by Axper uses Time of Flight vision to offer the highest accuracy for the counting at the entrance but allows, with additional devices, to follow your customer journey in order to understand their behavior in your stores.

#### GUARANTEED ACCURACY IN HIGH TRAFFIC



#### 3 DIMENSIONAL VISION

This counter calculates the depth within its field of view in order to measure the height and the size of the object for the highest precision.



### Extra features

DIFFERENTIATE THE  
COUNTS OF ADULTS,  
CHILDREN AND  
EMPLOYEES



ACCURATE IN  
ANY ENVIRONMENT  
EVEN IN THE  
COMPLETE DARK



MANAGE DWELL  
& SERVICE TIME



**Would you like to know more about 3D vision technology?**

Contact us, we will be happy to answer your questions.

1-866-658-2360 • [info@axper.com](mailto:info@axper.com) • [axper.com](http://axper.com)

# 3D vision technology

## PEOPLE COUNTING DEVICE

**AXper**

### ACCURACY

- Eliminates repeated entries or exits in the field of view
- Possibility to exclude employees by wearing lanyards
- Possibility to omit counting strollers or shopping carts
- Counts the number of entrances and exits separately
- No need to remove merchandise, displays or shelving under the counting zone

### INSTALLATION

- No special tools are needed to install the camera
- Remote configuration, management and diagnostics
- Communication TCP/IP
- Powered via the network (PoE)

### MAINTENANCE

- All in one device. No need for a data collector (eliminates failure points)
- Validation of the counts from the possible recording by the camera
- Not affected by darkness, bright sunshine or reflective surfaces

### FLEXIBILITY

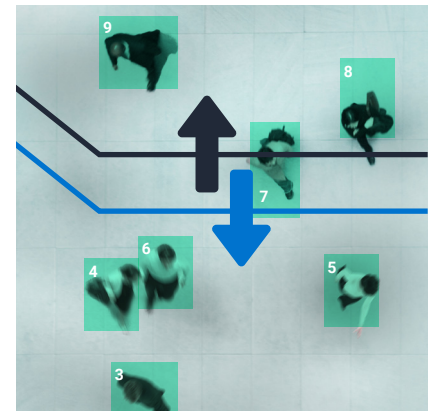
- 24/7 automatic counting
- Counting increments every 5, 15, 30, 60 minutes or real-time
- Personalized data file format
- Possibility of real time information

### TECHNICAL INFORMATION

Dimension	195mm x 110mm x 32mm
Mounting Height	From 2.0m to 4.5m / 6.5ft to 15ft
Surface mount	Aluminum • White or Black
Power supply	Max 4.5 watts • PoE IEEE 802.3af <12.95W
Mass	550 g

### NETWORK

Cabling	Cat5e or better
Ethernet	10/100 Mb Ethernet
IP address	DHCP or static IP
Protocols	TCP/IP, DHCP
Time synchronization	SNTP, Daytime, Protocol, Owner
Delivery of data	HTTP, HTTPS, FTP, FTPS, TCP/IP, SMTP
Software upgrade	TFTP



Remote view in real time of any site to configure counting line or zone or for validating the accuracy of the count.

**IN: 197    OUT: 158**



**Would you like to know more about 3D vision technology?**

Contact us, we will be happy to answer your questions.

1-866-658-2360 • [info@axper.com](mailto:info@axper.com) • [axper.com](http://axper.com)